



## General TECHNICAL DATA

Force	[kN]	4,5	(maximum)
Stroke	[mm]	50	(maximum)
Handwheel Turns	[ /10mm Stroke]	12	
Enclosure	EN 60529	IP 65	
Ambient Temperature	[°C]	-20 to +80 (S2) / -20 to +60 (S4)	
Weight (excluding Aux.)	[kg]	5,5	

## Actuation speed and TECHNICAL DATA

Actuator Type:		PSL204					
Actuation speed		0,5 mm/s [50Hz] / 0,6 mm/s [60Hz]					
Power Supply	[V]	230 VAC 1~	115 VAC 1~	24 VAC 1~	400 V 3~	24 VDC	
Frequency	[Hz]	50	60	50	60		
Rated Current ①	[A]	0,11	0,12	0,22	0,25	1	1,2
max. Power Consumption ②	[VA]	44	47	44	47	44	47
Operating Mode ③	IEC 34-1,8	S2 30min		S4 1200c/h 80%ED			
Motor Protection		Thermal Switch					

Actuator Type:		PSL204.1					
Actuation speed		1,0 mm/s [50Hz] / 1,2 mm/s [60Hz]					
Power Supply	[V]	230 VAC 1~	115 VAC 1~	24 VAC 1~	400 V 3~	24 VDC	
Frequency	[Hz]	50	60	50	60	50	60
Rated Current ①	[A]	0,23	0,21	0,46	0,42	2,2	2,01
max. Power Consumption ②	[VA]	72	68	72	68	72	68
Operating Mode ③	IEC 34-1,8	S2 30min		S4 1200c/h 50%ED			
Motor Protection		Thermal Switch					

Actuator Type:		PSL204.2							
Actuation speed		1,4 mm/s [50Hz] / 1,7 mm/s [60Hz]							
Power Supply	[V]	230 VAC 1~	115 VAC 1~	24 VAC 1~	400 V 3~	24 VDC			
Frequency	[Hz]	50	60	50	60	50	60		
Rated Current ①	[A]	0,27	0,23	0,54	0,45	2,5	2,2	0,12	0,09
max. Power Consumption ②	[VA]	81	72	81	72	81	72	102	85
Operating Mode ③	IEC 34-1,8	S2 30min		S4 1200c/h 50%ED					
Motor Protection		Thermal Switch							

Actuator Type:		PSL204.3					
Actuation speed		0,17 mm/s [50Hz] / 0,2 mm/s [60Hz]					
Power Supply	[V]	230 VAC 1~	115 VAC 1~	24 VAC 1~	400 V 3~	24 VDC	
Frequency	[Hz]	50	60	50	60	50	60
Rated Current ①	[A]	0,04	0,05	0,08	0,09	0,43	0,47
max. Power Consumption ②	[VA]	29,3	30,3	29,3	30,3	29,3	30,3
Operating Mode ③	IEC 34-1,8	S2 30min		S4 1200c/h 80%ED			
Motor Protection		blockable					

## Optional AUXILIARIES

for power supply:		230 VAC 1~	115 VAC 1~	24 VAC 1~	400 V 3~	24 VDC
Additional Limit Switches	2WE	✓	✓	✓	✓	✓
Single / Double Potentiometer	Pot	✓	✓	✓	✓	✓
Positioner	PSAP	✓	✓	⑤	④	—
Position Transmitter	PSPT	✓	✓	✓	✓	✓
Heating Resistor	H	✓	✓	✓	✓	✓
Local Control	PSC	✓	✓	✓	④	—
Enclosure	EN60529					IP 67

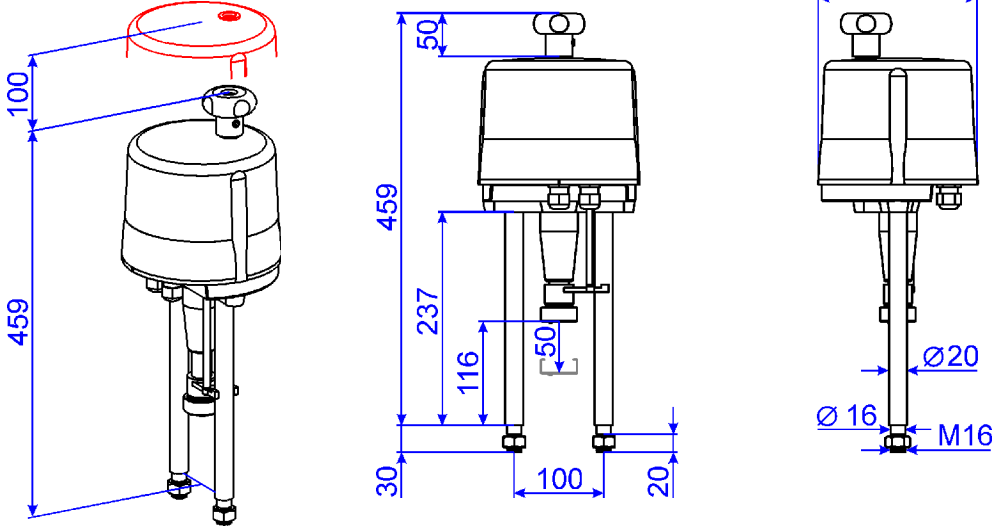
### Legend:

- ① = Motor current at rated torque, without auxiliaries
- ② = Maximum power consumption including auxiliaries
- ③ = at 25°C ambient temperature

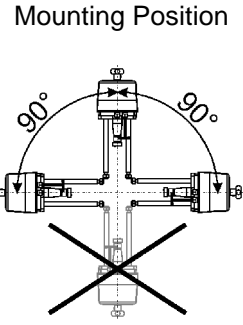
- ④ = only together with reversing starter contactor
- ⑤ = external relays required for velocities: 1,0mm/s and 1,4 mm/s
- ✓ = available
- = not available



**DIMENSIONS [mm]**



**PSL 204**



**Dimensions for PS - Standard coupling**

(For threaded valve stem, locked with tension pin)

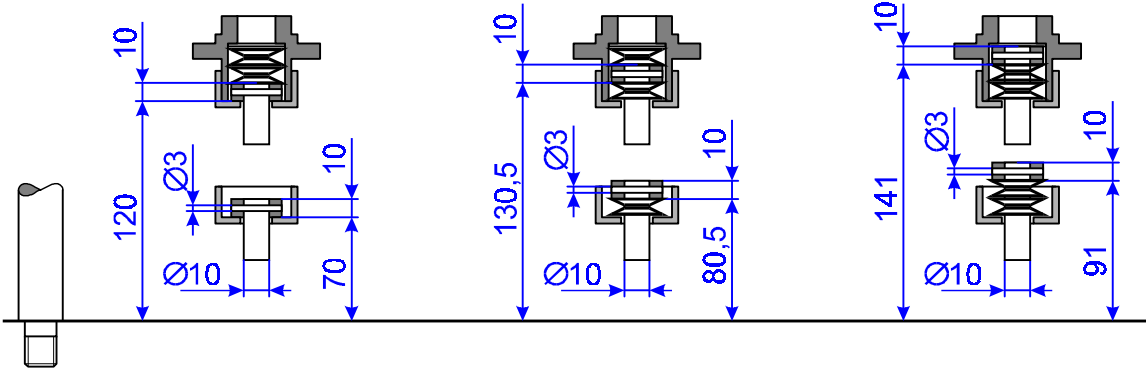
**Through Valve**

Closing Direction: Retracting Valve Stem

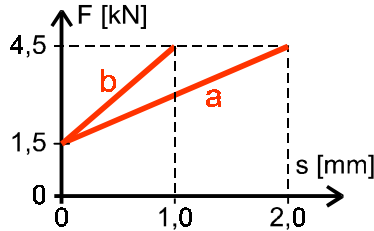
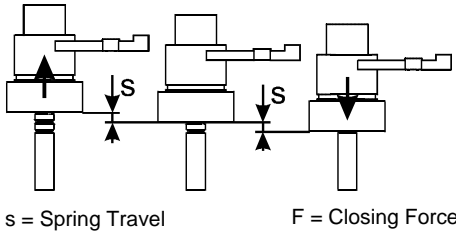
**3-Way Valve**

**Through Valve**

Closing Direction: Extracting Valve Stem

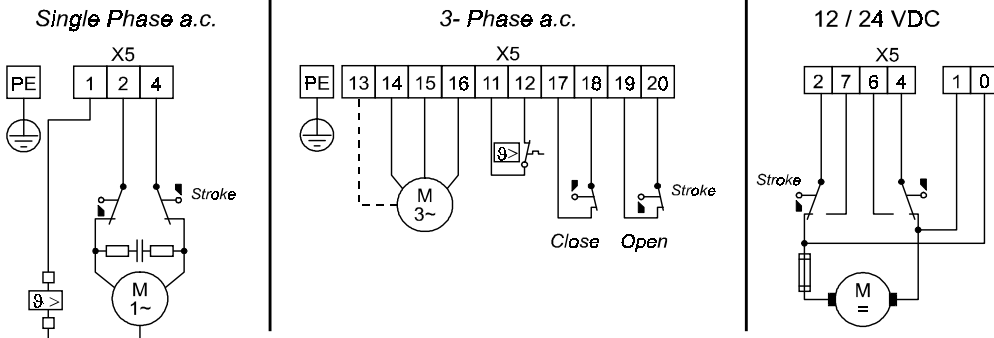


**Adjustment Closing Force**



a = Spring Travel for Through Valve  
b = Spring Travel for 3-Way Valve

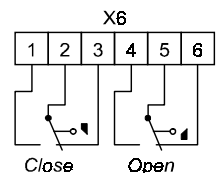
**WIRING DIAGRAM**



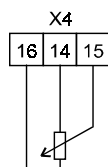
**STANDARD EQUIPMENT**

- Adjustable mechanical stops
- 2 limit switches
- Handwheel with indicator for operating direction
- Mechanical position indicator
- 2 cable glands PG13,5
- Central main frame for fitting optional auxiliaries

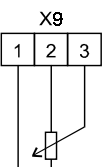
**AUXILIARY LIMIT SWITCHES**



**AUXILIARY POTENTIOMETER 1**



**AUXILIARY POTENTIOMETER 2**



**HEATING RESISTOR**

